

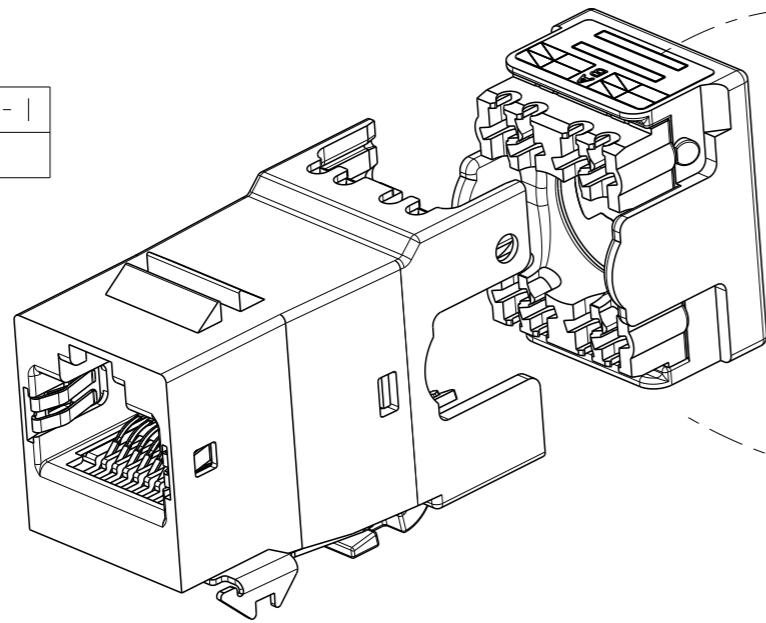
|               |           |
|---------------|-----------|
| 108-93044     | 1711342-2 |
| 108-93003     | 1711342-1 |
| PRODUCT SPEC. | PN-DASH   |

COLOUR CODING / LABELS:

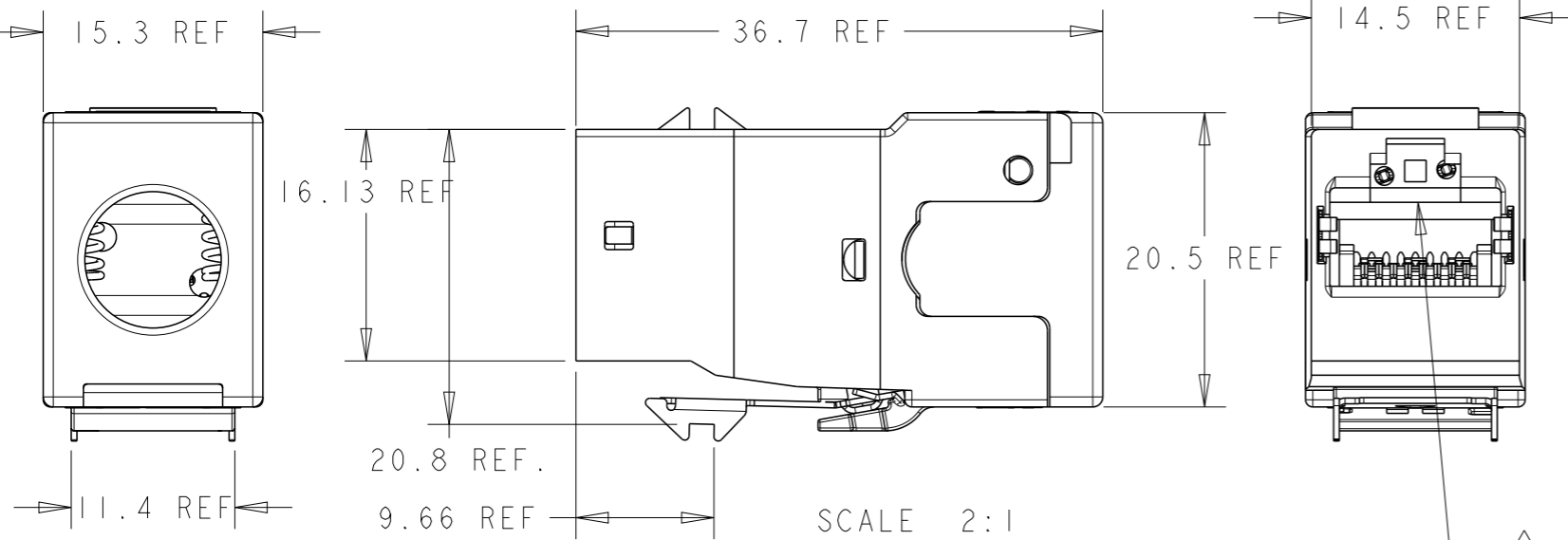
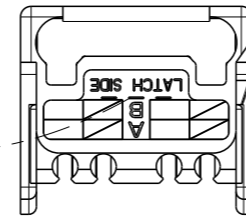
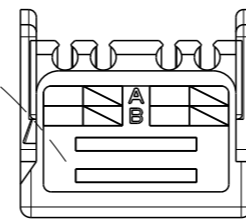
|          |           |
|----------|-----------|
| AS SHOWN | 1711342-1 |
| COMMENTS | PN        |



GENERAL VIEW



SCALE 2:1



SCALE 2:1



MATERIAL:

- FRONT AND REAR HOUSING, CABLE CLAMP: ZAMAK 5. (Z410).
- IDC CONNECT BLOCK, DUST COVER AND LACING FIXTURE: POLYCARBONATE NATURAL.
- CUTTING BLADE, SPRINGS, SHIELD CONTACT POINT AND LATCH: STAINLESS STEEL.
- JACK CONTACTS: BERYLLIUM COPPER, PLATED WITH 1.27  $\mu$ m MINIMUM THICK GOLD IN LOCALIZED AREA AND 3.81  $\mu$ m MINIMUM THICK MATTE TIN IN SOLDER AREA OVER 1.27  $\mu$ m MINIMUM THICK NICKEL UNDERPLATE.
- IDC TERMINALS: PHOSPHOROUS BRONZE, PLATED WITH 3.81  $\mu$ m MINIMUM THICK BRIGHT MATTE TIN OVER 1.27 MINIMUM THICK NICKEL UNDERPLATE.



AMP-TWIST-6S SL JACK WILL TERMINATE:

- SOLID CONDUCTORS: 22-26 AWG.
- STRANDED CONDUCTORS: 24-26 AWG.
- MAX. INSULATION DIAMETER:  $\phi$ 1.60 mm.
- MAX. CABLE JACKET:  $\phi$ 9.00 mm.



CAVITY ACCORDING TO IEC 60603-7-5 Ed. 1.0



MOUNTING PANEL THICKNESS 1.47-1.60 mm. (SEE SUGGESTED CUTOUT).



THESE TWO SUGGESTED CUTOUT OPENINGS ARE USED IN TANDEM WITH DUAL FRONT AND BACK CUTOUTS.



PACKAGING: ACCORDING TO SPEC. 107-93003.

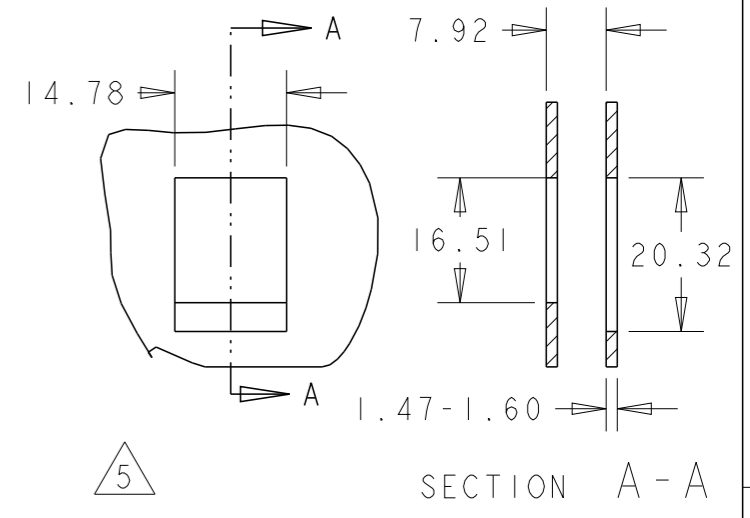
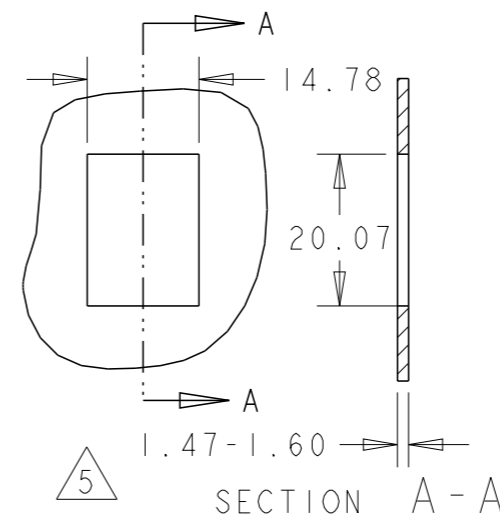


REFER TO 411-93007 FOR TERMINATION INSTRUCTIONS USING SL SERIES TOOL TERMINATION: SL SERIES JACK TOOL PN 1725150-3.

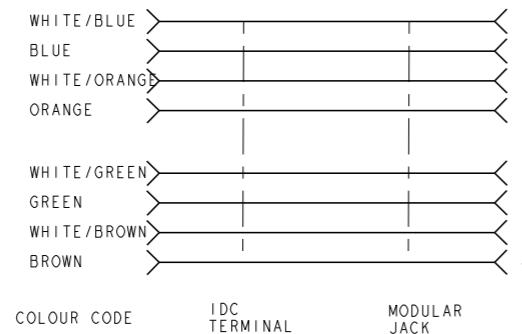
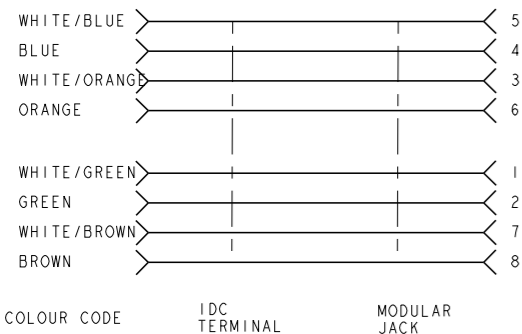


DIMENSIONS SHOWN ARE FOR REFERENCE ONLY.

SUGGESTED CUTOUT: SINGLE AND FLUSH-MOUNT APPLICATION

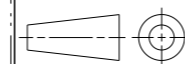


ELECTRICAL SCHEMATIC: WIRING T568 A/B



THIS DRAWING IS A CONTROLLED DOCUMENT.

DIMENSIONS: mm



MATERIAL

TOLERANCES UNLESS OTHERWISE SPECIFIED:

|        |   |
|--------|---|
| 0 PLC  | ± |
| 1 PLC  | ± |
| 2 PLC  | ± |
| 3 PLC  | ± |
| 4 PLC  | ± |
| ANGLES | ± |
| FINISH | - |

DWN 25JUL2005  
 A. CARRERAS  
 CHK 26JUL2005  
 L. de DIOS  
 APVD 16JUN2006  
 J. SANABRA  
 PRODUCT SPEC  
 108-93003  
 APPLICATION SPEC  
 411-93007  
 WEIGHT -

|                  |           |   |               |
|------------------|-----------|---|---------------|
|                  |           | NAME  |               |
|                  |           | AMP-TWIST 6S SL JACK REAR CABLE EXIT W/O DUST COVER |               |
| SIZE             | CAGE CODE | DRAWING NO  | RESTRICTED TO |
| A3               | -         | ©-1711342   | -             |
| Customer Drawing |           | SCALE   | SHEET OF REV  |
|                  |           | 1:1   | 1 OF 1 D3     |